

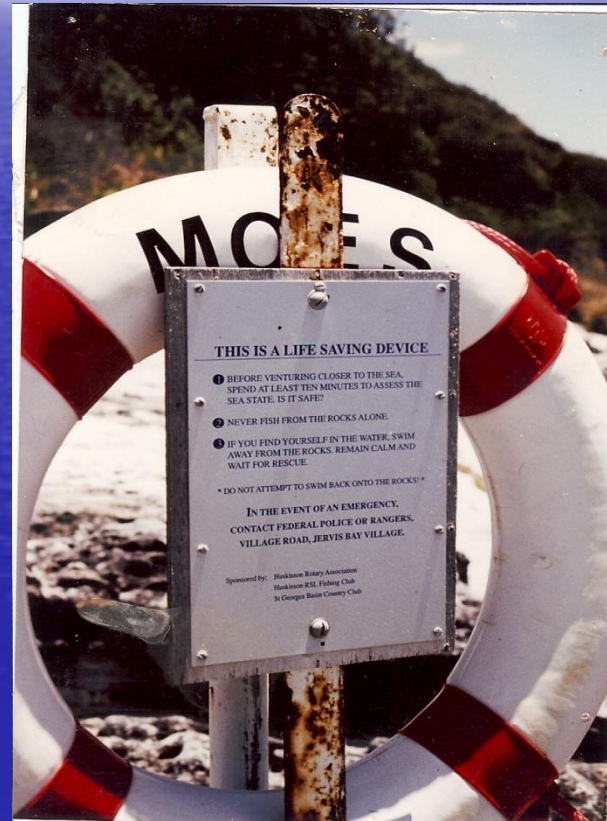


# ANGEL RING PROJECT

**Australian National Sportfishing Association  
2011**



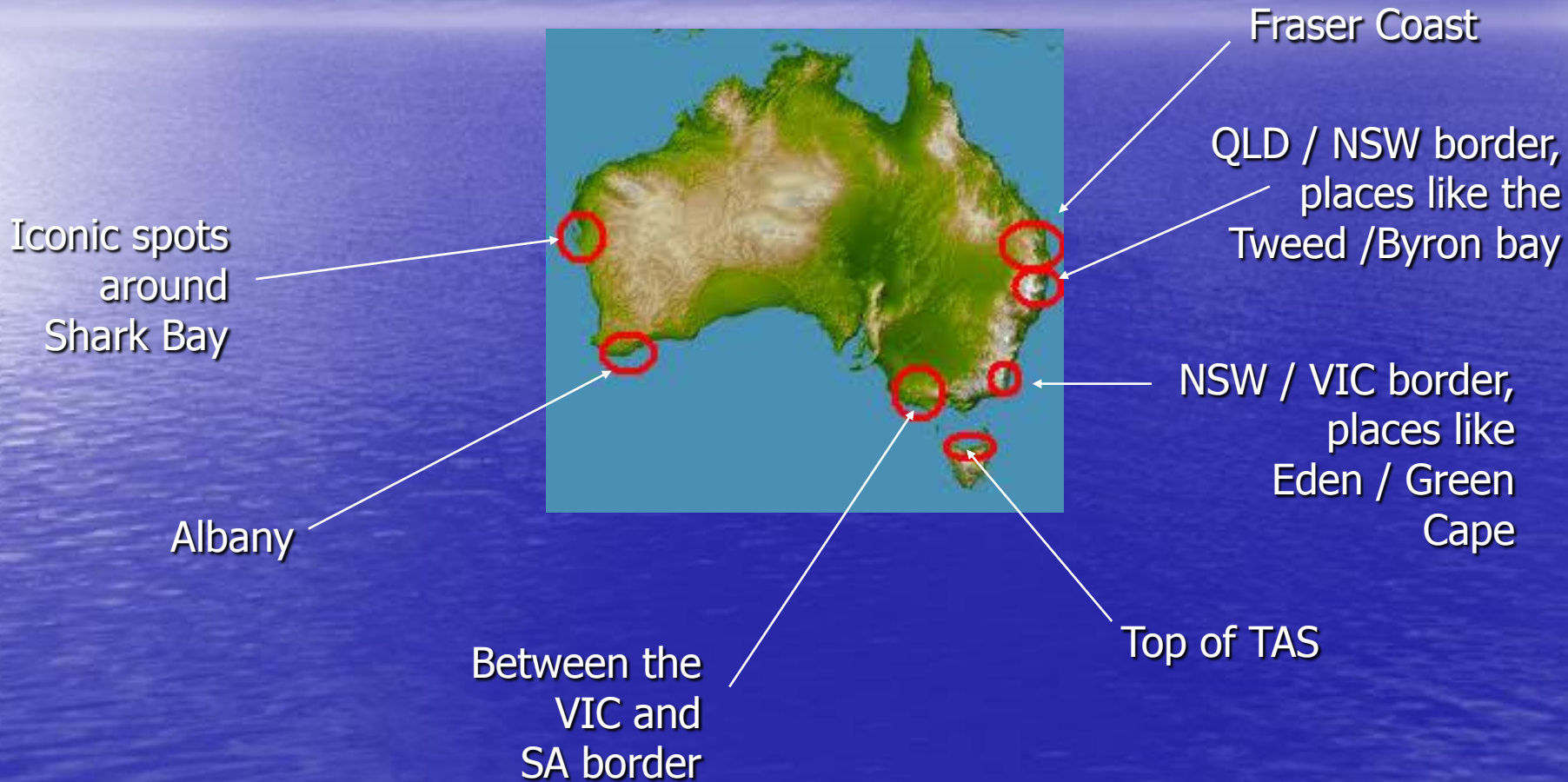
- The very first Guardian Angel Ring at Moes Rock in Booderee NP, Jervis Bay – circa 1993



FOR MORE INFO...

[www.angelrings.com.au](http://www.angelrings.com.au)

# Angel Rings around Australia



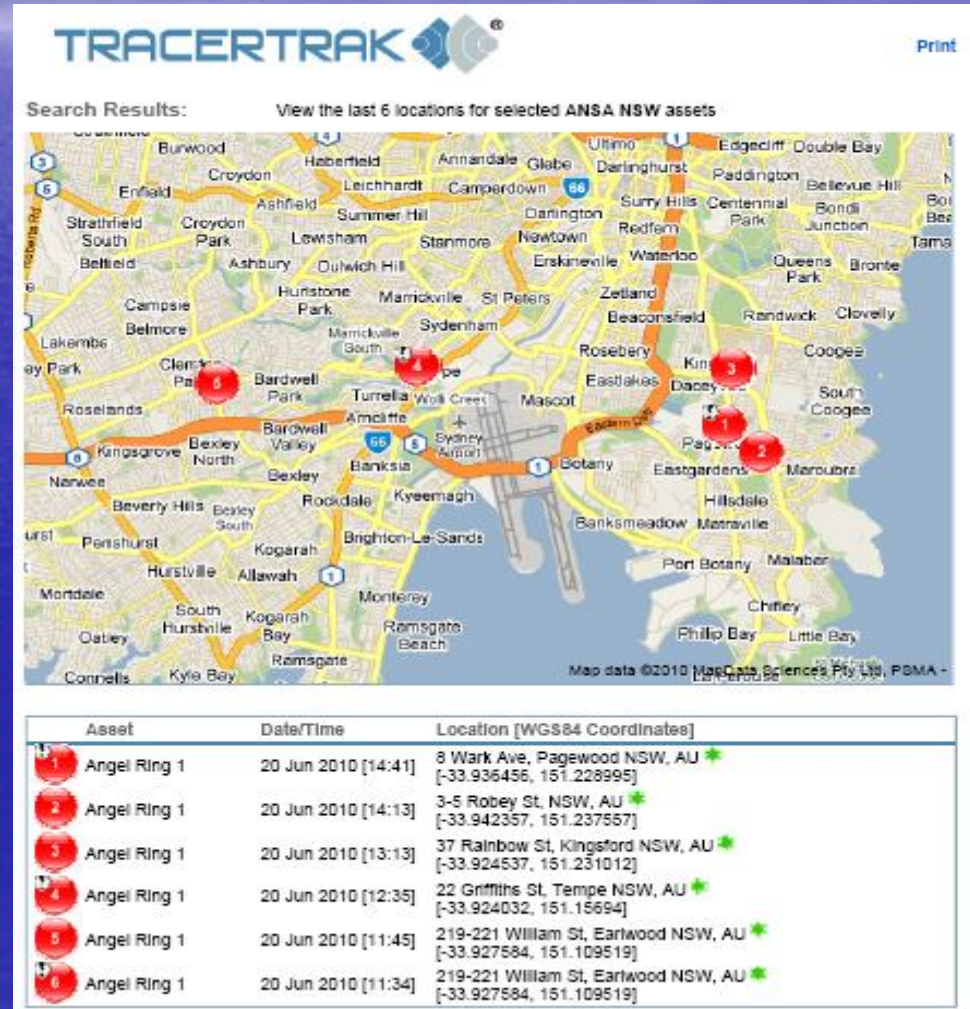
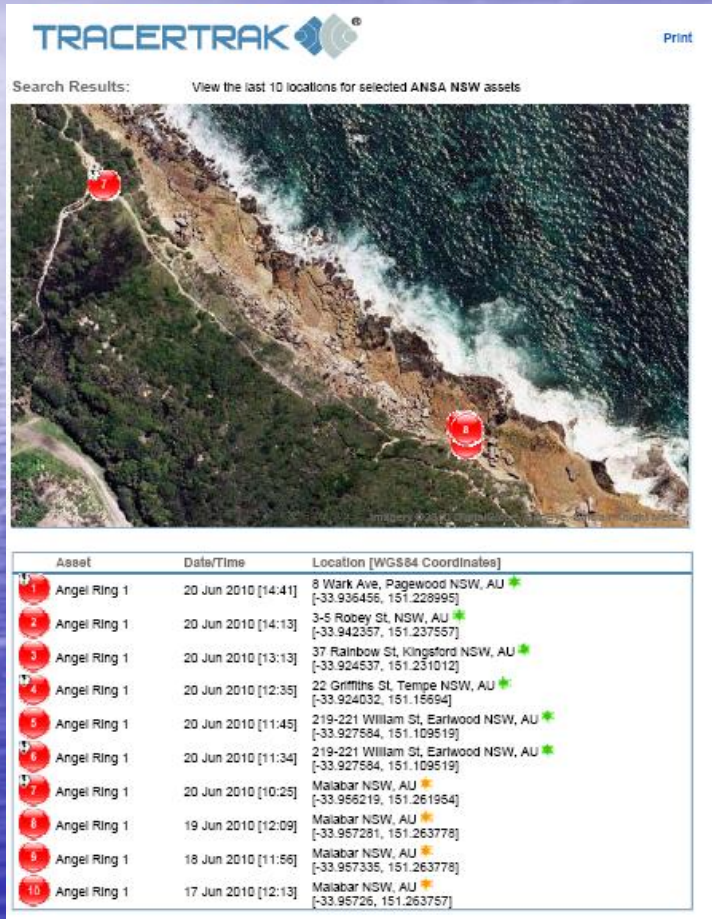
**FOR MORE INFO...**

[www.angelrings.com.au](http://www.angelrings.com.au)



# -GPS Enabled Angel Rings

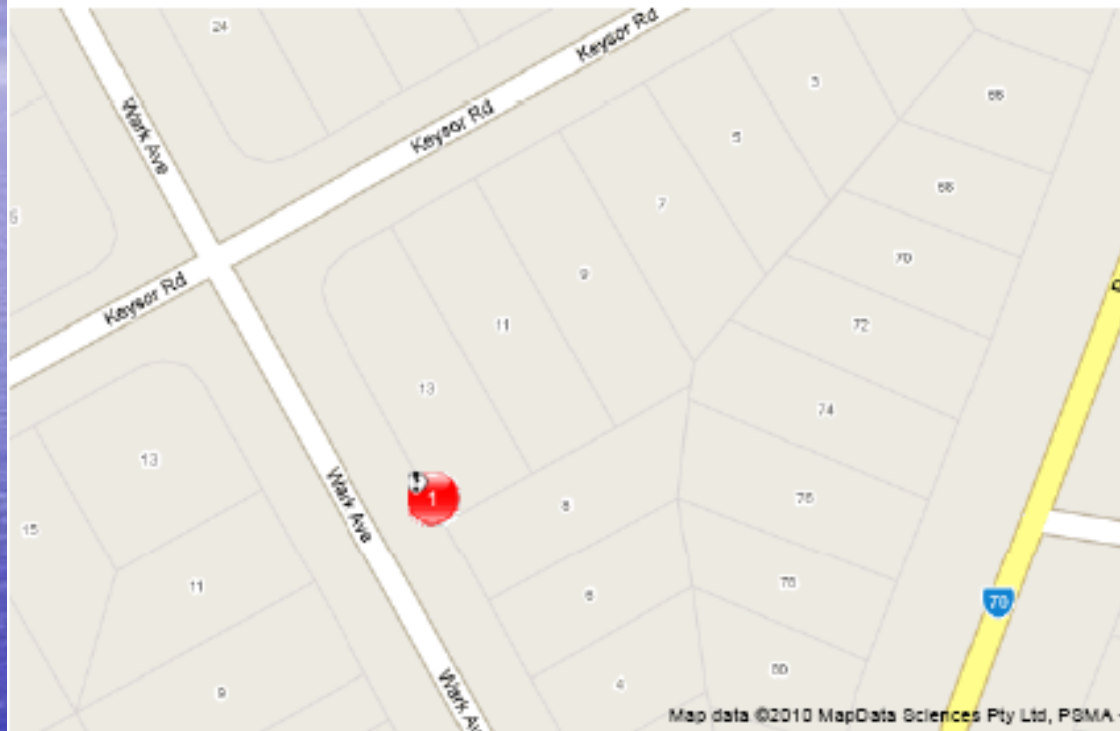
- ANSA is trialing Angel Rings with asset trackers embedded in them





FOR MORE INFO...

[www.angelrings.com.au](http://www.angelrings.com.au)

Search Results: View the last known location for selected ANSA NSW assets

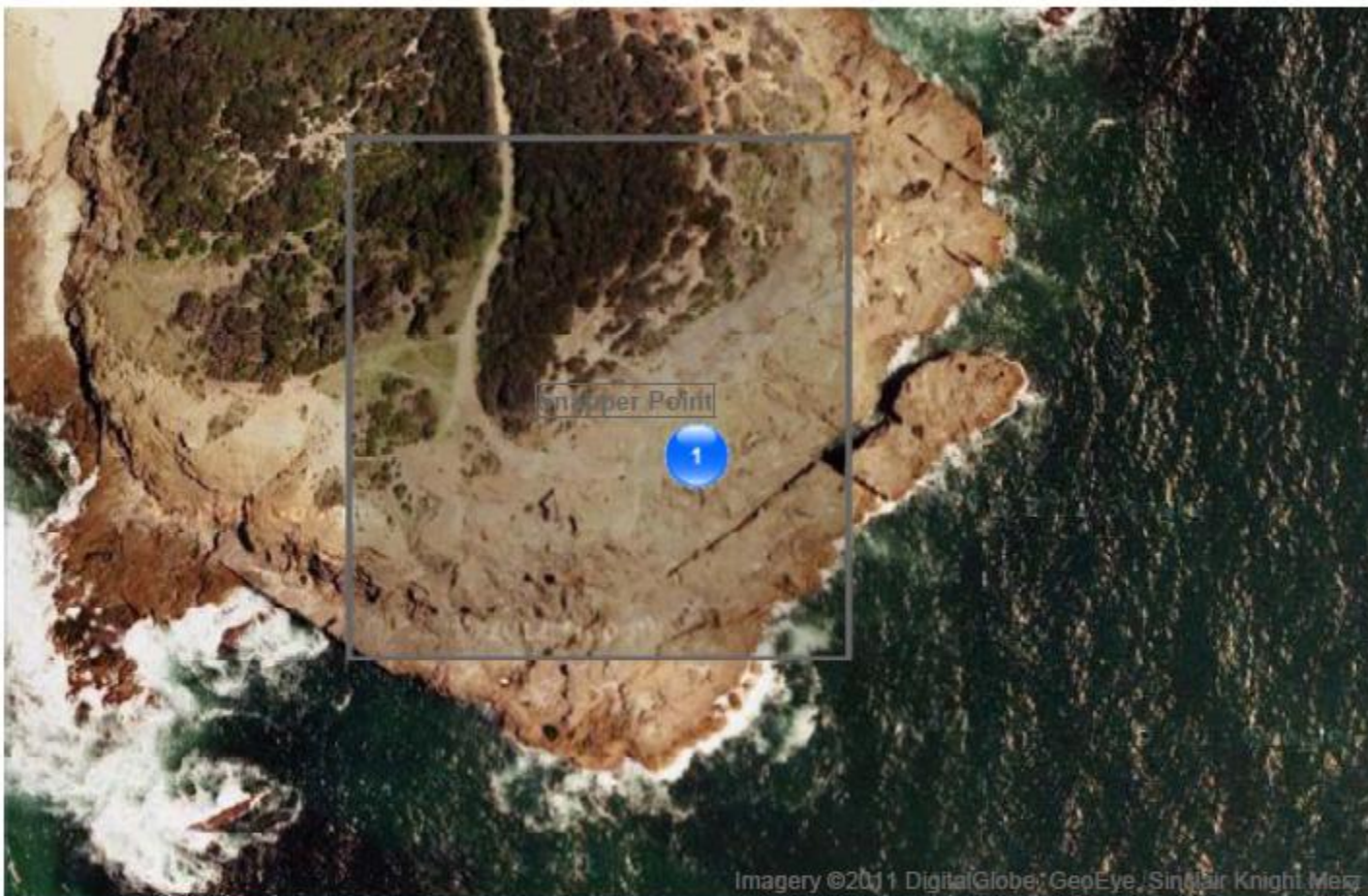




Asset	Date/Time	Location [WGS84 Coordinates]
 Angel Ring 1	20 Jun 2010 [14:41]	8 Wark Ave, Pagewood NSW, AU  [-33.936456, 151.228995]



## Search Results:

View the last known location for selected ANSA NSW assets





Asset	Date/Time	Location [WGS84 Coordinates]
 Snapper Point	27 Aug 2011 [05:52]	Snapper Point Rd, Frazer Park NSW, AU  [-33.18723, 151.628473]

## Search Results:

View the last known location for selected **ANSA NSW** assets

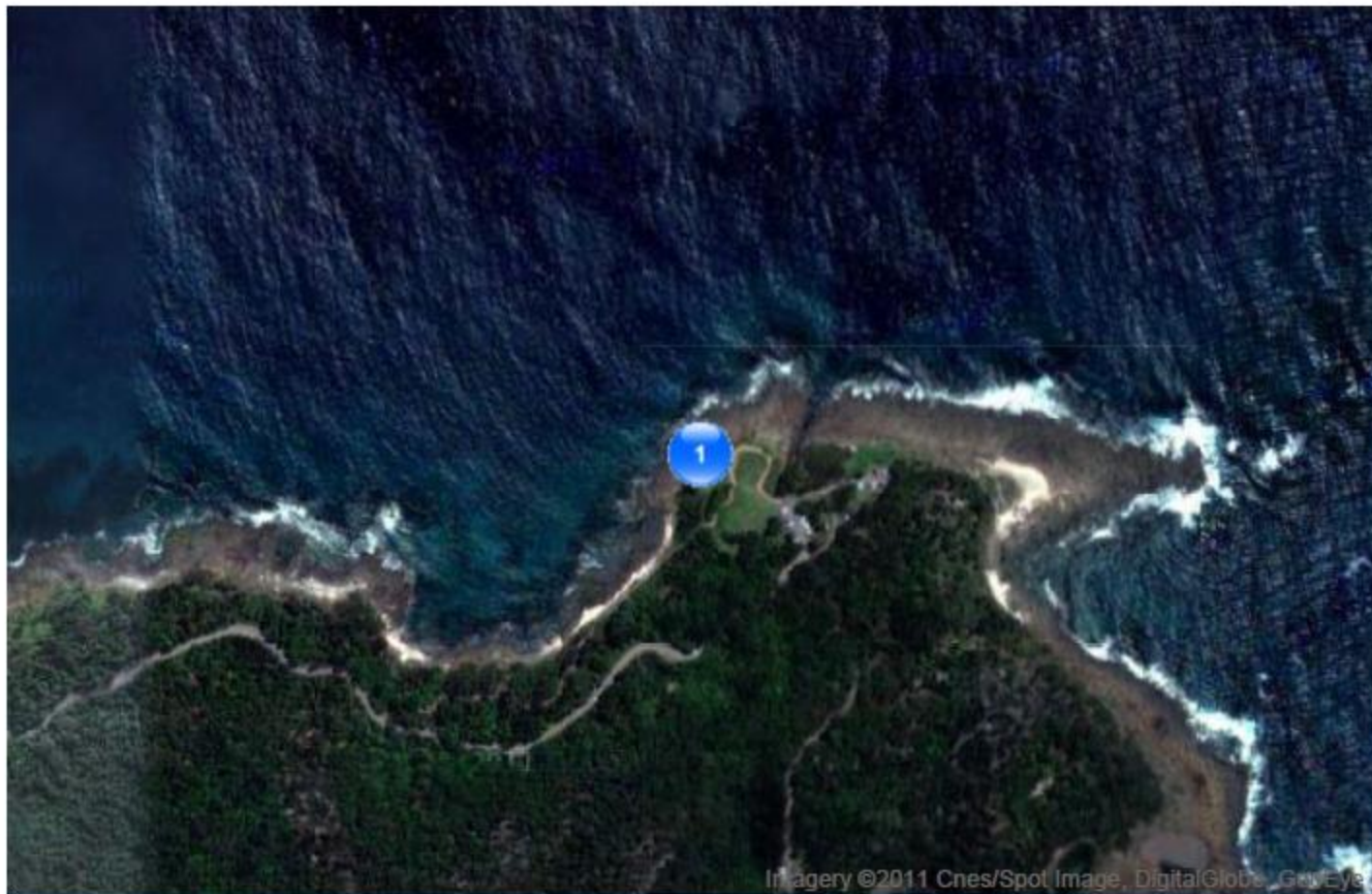


Asset	Date/Time	Location [WGS84 Coordinates]
 Merimbula Wharf	27 Aug 2011 [05:54]	LOT 475 Lake St, Merimbula NSW, AU  [-36.89886, 149.927244]





## Search Results:

View the last known location for selected ANSA NSW assets



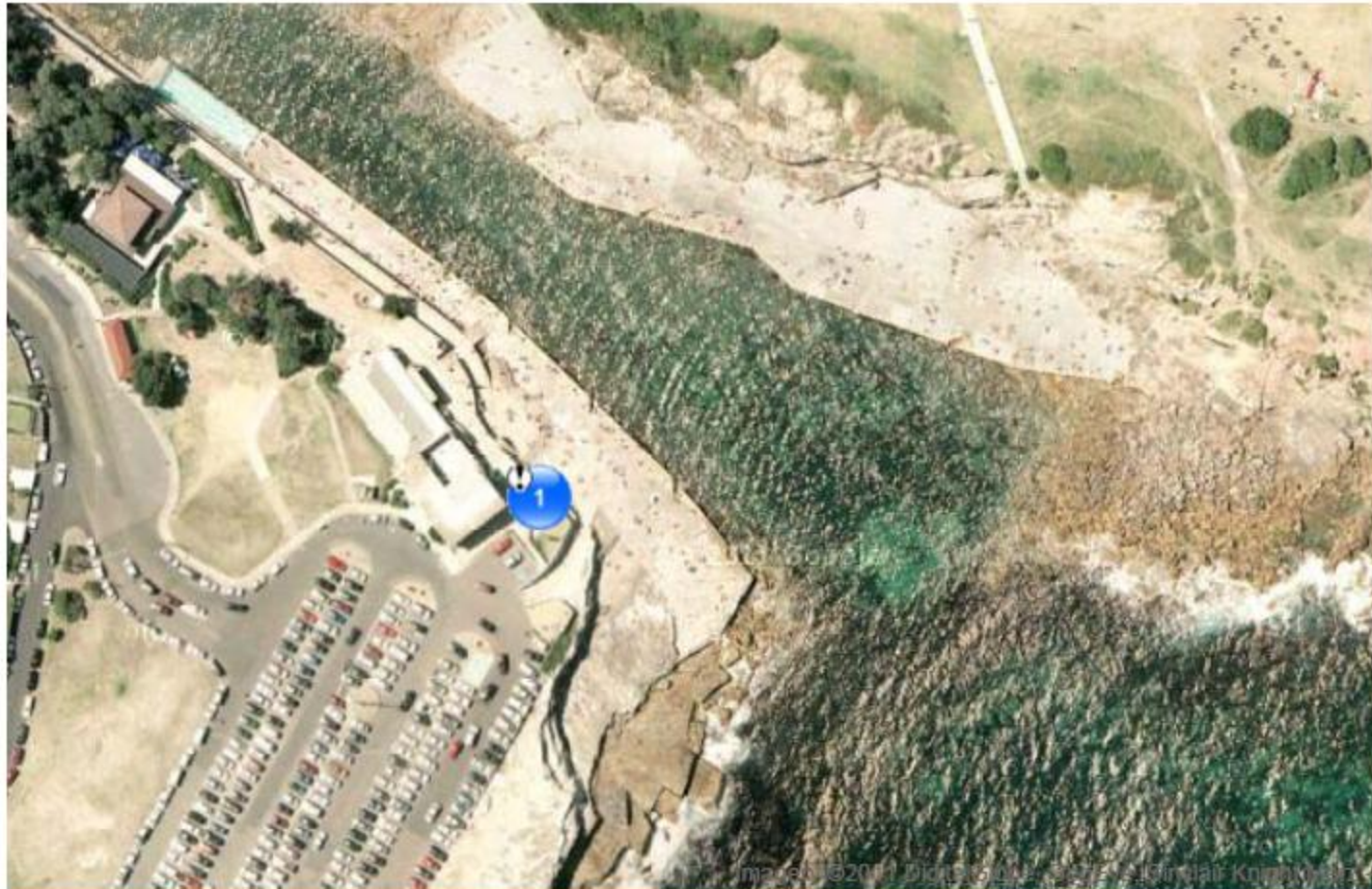
Imagery ©2011 Cnes/Spot Image, DigitalGlobe, GeoEye



Asset	Date/Time	Location [WGS84 Coordinates]
 Bass Point	27 Aug 2011 [06:09]	LOT 2 Bass Point Tourist Rd, Shell Cove NSW, AU  [-34.593405, 150.897775]



## Search Results:

View the last known location for selected **ANSA NSW** assets

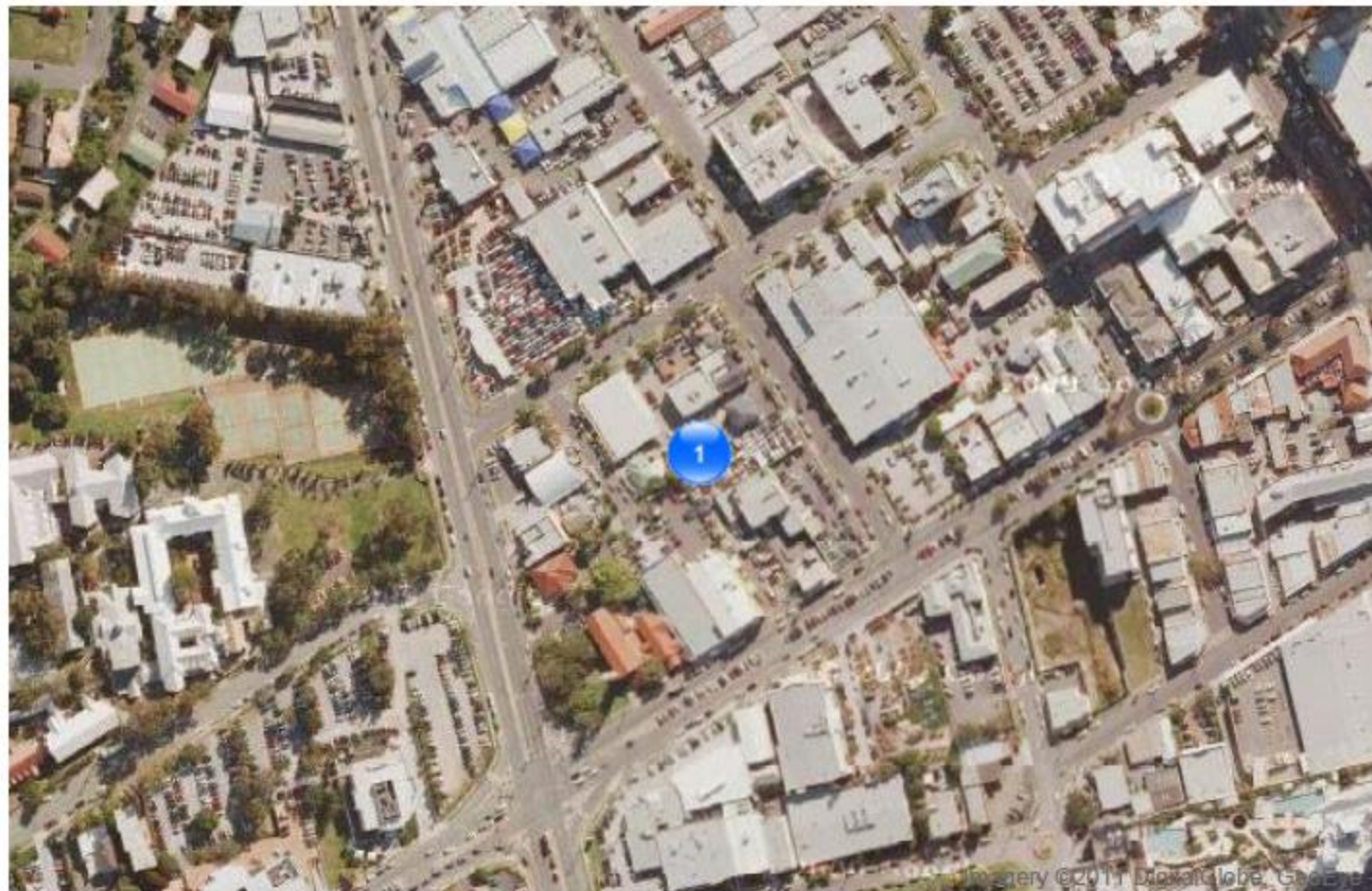


Asset	Date/Time	Location [WGS84 Coordinates]
 Clovelly Pool	27 Aug 2011 [02:05]	LOT 7010 Clovelly Rd, Clovelly NSW, AU  [-33.914956, 151.267726]



## Search Results:

View the last known location for selected ANSA NSW assets



Asset	Date/Time	Location [WGS84 Coordinates]
1 0-636854	16 Aug 2011 [13:17]	71A Nerang St, Gold Coast QLD, AU ★ [-27.968305, 153.410833]



© This work is copyright.  
Apart from any use permitted under the Copyright Act,  
no part may be reproduced by any process,  
or any other exclusive right exercised,  
without the permission of AEP SHEETMETAL Pty Ltd.

No.	REVISION
1	Additional Arrangement



1	See individual assembly drawings for Detail.
No.	NOTES
Description: Wall Mount, Post Mount, (Bolted and Imbedded) Double and Single Rings.	

Title - <b>Angel Ring Project</b> - <b>Product Range</b>		
Drawing No. - <b>0705101</b>	10/5/07	
	HDT	
<b>AEP SHEETMETAL Pty Ltd</b> 4 Bouralee Street Botany 2019 Phone 02 9695 1455 Fax 02 9695 1466 ABN 40 000 674 653		

- New warning signs designed by Surf Life Saving Australia for ANSA to utilise Australia wide



FOR MORE INFO...

[www.angelrings.com.au](http://www.angelrings.com.au)



# Why do we do it



FOR MORE INFO...

[www.angelrings.com.au](http://www.angelrings.com.au)