

SOUTH SYDNEY AMATEUR FISHING ASSOCIATION INC

PO BOX 328, MATRAVILLE NSW 2036



APRIL 2007

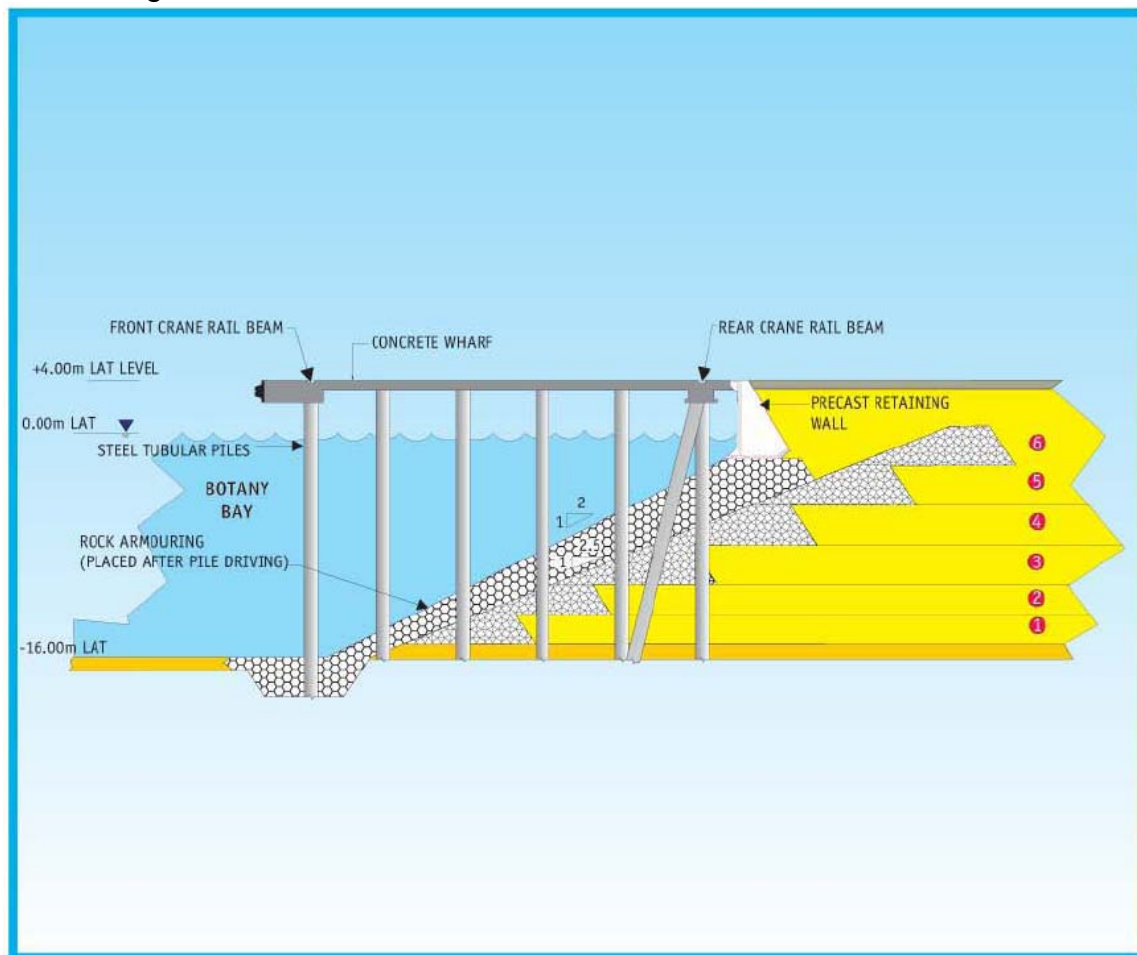
Does Sydney Ports Corporation have new plans for the Port Botany Expansion? Is the 2003 Environmental Impact Statement Worthless?

To all concerned anglers in NSW,

Having seen a raft of changes to the 2003 EIS that SPC sold us the Port Expansion on, my initial answer to the above questions is YES.

Investigations are continuing into the whether or not SPC is trying to change the Wharf Structure Design and whether or not we will go from a sloping rock embankment to a vertical wharf face in order to save money.

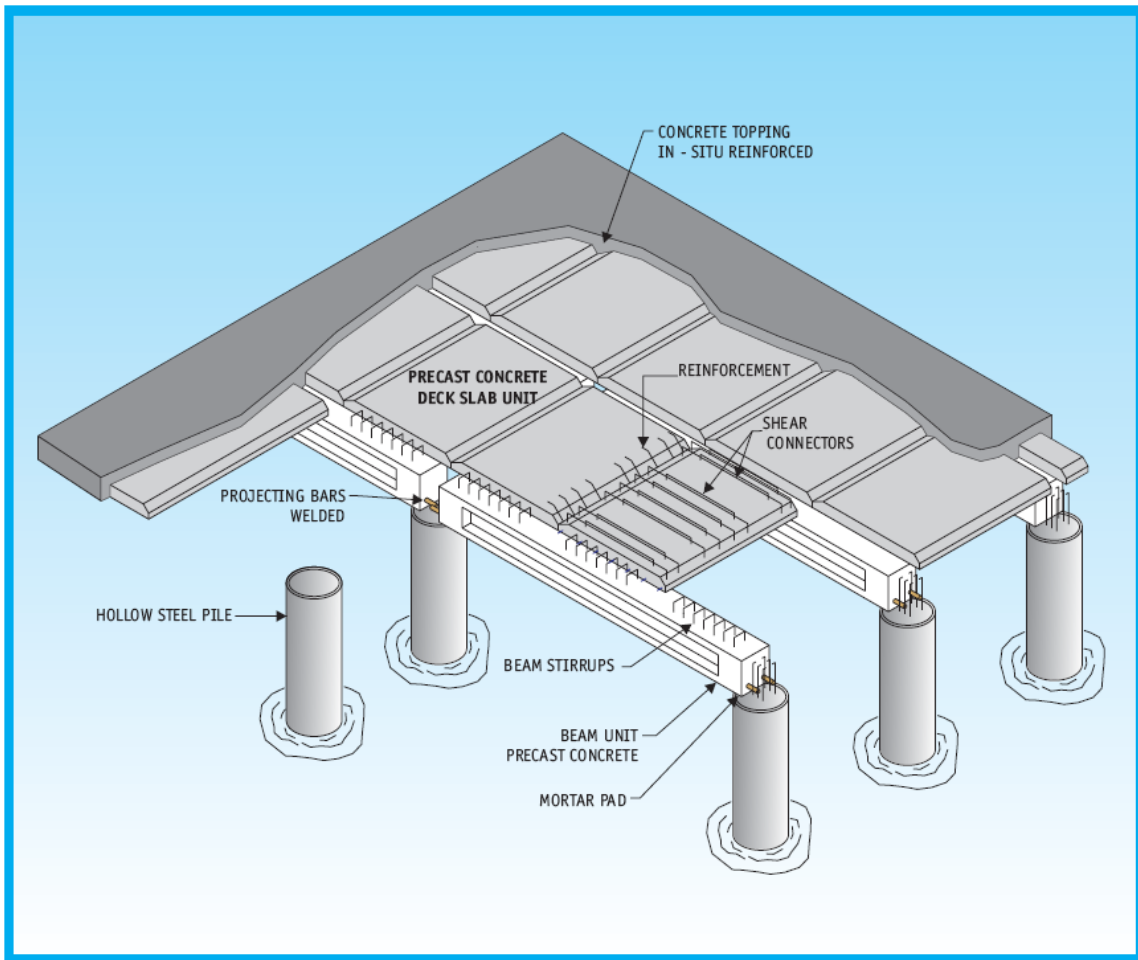
This is the design from the 2003 EIS:



- ① Stage of Works
- Dredged Sand Reclamation
- Rock Armouring
- Rock Embankment
- Existing Sand Bed

Proposed Wharf Design **Figure 8.7**

Stan Konstantaras
President
South Sydney Amateur Fishing Association
PO BOX 328 Matraville, NSW. 2036
Email: pastelli@netspace.net.au



Substructure and Decking **Figure 8.9**

Environmental

Penrhyn Estuary would be conserved as an area of ecological significance within an area of approximately 27 ha to retain and expand shorebird feeding and roosting habitat including intertidal sand/mudflats, saltmarsh habitat and removal of colonising mangroves.

Up to 8 ha of seagrass habitat would be created in Penrhyn Estuary and the tidal channel between the new terminal and the shoreline to replace the 4 ha lost as a result of the development.

Use of a rock embankment design for the new terminal would provide habitat for a variety of invertebrates, fish and other marine organisms.

A rock bund would be installed at the mouth of the Mill Stream to define the channel and control

A lot of emphasis was placed on the fact that this shaded area would provide habitat. In much the same way we have been told that sanctuary zones in our new marine parks would benefit us with a spillover effect, this wharf structure was to become a defacto sanctuary zone and provide additional fish stocks by virtue of new habitat and spill over.

The Centre for Research on Ecological Impacts of Coastal Cities www.eicc.bio.usyd.edu.au/projects , at the University of Sydney has many supporting documents on the subject. Shaded wharf structures and rock walls do provide habitat for marine fishers and organisms, and fisherman or even Fisheries researcher could have told you this.

SPC states that the rock embankment design would increase the amount of habitat in the Bay, and the rocks would provide habitat for invertebrates and animals. Was this another lie to get their EIS through? What happens to the 3000 piles under the wharf that would support the large numbers of fish that occur on other similar sites? Once again, anglers and Fisheries Researchers will tell you large numbers of fish are found around similar sites.

It seems now SPC has shown contempt for the community, the recreational anglers who fish Botany Bay, the fish and the thousands of other species that would have lived under their wharf. More slash and burn mentality, after ripping up 57 hectares of the bay, dredging the guts out of the Bay, now the Bay stands to lose another 1100m² of fish and marine organism habitat so that SPC can save a few \$\$\$\$\$.

What are our NSW Fisheries Managers doing?

At least Sydney Airport Corporation Ltd provided an additional 7km of rock wall embankment around the runways when it completed its rectification works to the parallel runway in September 2006 Even with the new exclusion zones, at least SACL unintentionally provided some new habitat within Botany Bay, going some of the way to becoming a good corporate citizen. All SPC wants to do in backfill and concrete the whole area to save a few \$\$\$\$\$.

As advised by SPC, who are beyond listening to anything the community has to say, included below are the contact details of the local members involved within the Port Botany Expansion boundary and ultimately the boat ramp facility. Whilst SPC only mentioned to contact the Local Members, SSAFA also thinks that it is appropriate that the Consultative Committee, the Minister for Ports and the Premier of NSW be updated as well. So who ever you chose to write to, send a copy of the letter to everyone listed,

heffron@parliament.nsw.gov.au

Kristina Keneally- Member for Heffron

maroubra@parliament.nsw.gov.au

Michael Daley- Member for Maroubra

thepremier@www.nsw.gov.au

Morris Iemma, Premier of NSW

joe@tripodi.minister.nsw.gov.au

Joe Tripodi, Minister for Ports

botany.terminal.project@sydneyports.com.au

Community Consultative Committee

crudd@sydneyports.com.au

Community Consultative Committee Colin Rudd- Sydney Ports

Alternatively feel free to contact me or drop into our fishing club on the corner of Hastings and Macquarie Streets Chifley. We are open every Wednesday night from 7pm and willing to listen to whatever you have to say, unlike some.

Yours sincerely



Stan Konstantaras

President – South Sydney Amateur Fishing Association

President- Australian National Sportfishing Association – NSW Branch